



Ryecroft, Harlow, CM19 4BG

Geoffrey Matthew Estates are delighted to offer for sale this two bedroom, end of terrace, freehold house set in the popular residential area of Ryecroft. Ideally located for access to the town centre, PAH hospital and local transport links. The property itself does require a degree of modernisation throughout. Situated at the end of a pedestrianised cul-de-sac, this property would make an ideal first time purchase or investment.

Early viewings are highly recommended!

Guide Price £259,500

Ryecroft, Harlow, CM19 4BG



- CHAIN FREE
- Two Bedrooms
- End of Terrace
- Scope To Renovate/Improve
- Located In Corner Of Pedestrianised Cul De Sac
- Concrete Construction

Accommodation Comprises:

Hallway

Lounge

11'2 x 18'2 (3.40m x 5.54m)

Kitchen

7'4 x 10'11 (2.24m x 3.33m)

First Floor Landing

Bedroom

15'9 x 8'11 (4.80m x 2.72m)

Bedroom

11'11 x 9' (3.63m x 2.74m)

Bathroom

6'6 x 5'6 (1.98m x 1.68m)

Agents Note

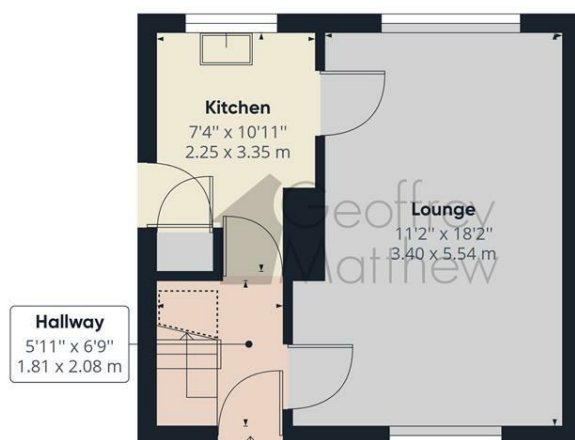
Please be aware this property is of Concrete construction



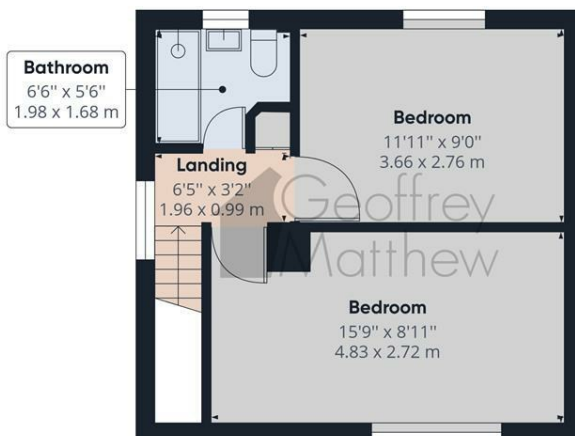
Directions



Floor Plan



Floor 0



Floor 1



Geoffrey
Matthew

Approximate total area⁽¹⁾

650.98 ft²
60.48 m²

Reduced headroom

5.51 ft²
0.51 m²

(1) Excluding balconies and terraces

☐ Reduced headroom
(below 1.5m/4.92ft)

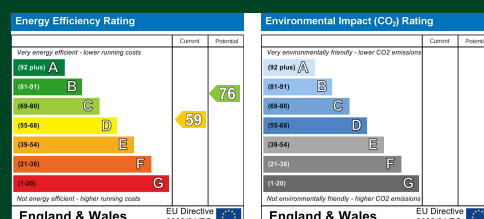
While every attempt has been made to ensure accuracy, all measurements are approximate, not to scale. This floor plan is for illustrative purposes only.

GIRAFFE360

Council Tax Details

Harlow Band C

These particulars, whilst believed to be accurate are set out as a general outline only for guidance and do not constitute any part of an offer or contract. Intending purchasers should not rely on them as statements of representation of fact, but must satisfy themselves by inspection or otherwise as to their accuracy. No person in this firm's employment has the authority to make or give any representation or warranty in respect of the property.



Old Harlow: 01279 444988 Email: harlow@geoffreymatthew.co.uk
Great Ashby: 01438 740111 Email: greatashby@geoffreymatthew.co.uk